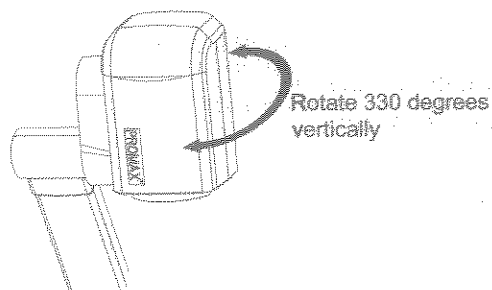


WORKING ON THE STAGE

1. Place your material on the working surface.
2. Select the enlargement required with the "⊕T" and "W⊖" keys.
3. Adjust the focus with the "Near" and "Far" keys or "AUTO" key.

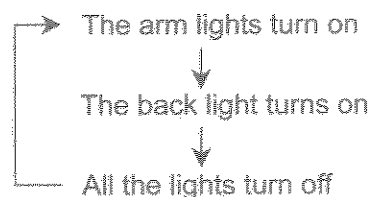
WORKING OUTSIDE THE STAGE

For showing 3-dimensional objects with the ProMax® DP580, just place them on the working surface and adjust the "⊕T" or "W⊖" and "AUTO" keys. If the object is too big for the stage or you want to show it from the side, just place it behind or in front of the unit and tilt the camera by hand.



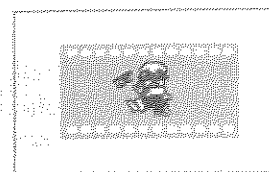
LIGHT

The arm lights are on when the power is on. Each time you press the "LAMP" buttons, the lighting changes as below.

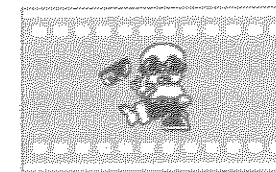


ADJUSTING IMAGE SIZE

In order to reduce or enlarge the image size displayed on the screen, press the "⊕T" or "W⊖" button.



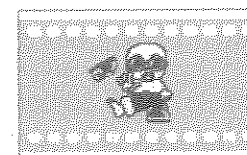
WIDE



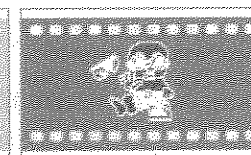
TELE

WORKING WITH NEGATIVES

The visualizer is automatically set to display normal materials on the screen when the power is on. To display negatives, turn on the backlight by pressing the "LAMP" key, and then press the "Neg" button to display the film negatives. Press the "Neg" button again to display normal materials in the color mode.



Positive



Negative

FOCUSING

When the Visualizer is turned on the focus automatically adjusts to the stage, it is not necessary to readjust the focus if you are only working with flat materials (text, photos, etc.). Only 3D objects require a focus adjustment.

Press the "AUTO" button to auto focus.

Press the "FAR" or "NEAR" button once to focus manually.

FREEZING IMAGE

Press the "Frz" button to freeze the image. When the output signal is RGB, in order to show a still image on the screen, press the "Frz" button. The frozen image can't be adjusted (Zoom in/out, color adjustment, etc.).

BRIGHTNESS ADJUSTMENT

If the image effect is not satisfactory, you can adjust the brightness to get a better image effect. Use the "BRIGHT +" or "BRIGHT -" button to adjust the brightness. To increase the brightness, press the "BRIGHT +" button. To decrease it, press the "BRIGHT -" button. To go back to the initial brightness press the "AUTO" button.

WHITE BALANCE ADJUSTMENT

Each time the lighting condition changes, the user should adjust the white balance of the CCD.

Press the "AUTO" button to adjust the white balance automatically.

AUTO ADJUSTMENT

One of the DP580's special functions is auto adjustment. Press the "AUTO" button to auto adjust the white balance and the focus. The whole process takes about 10 seconds.

TEXT/IMAGE MODE

Press the "TEXT" button to switch between image/text modes. To display a text file, switch to the text mode to get a clearer text effect. (On the remote control)

COLOR AND B&W MODE SWITCH

Press "B&W" once to enter the Black & White mode; Press again to return to the Color mode.

SWITCHABLE AV INPUTS

Press the "AUDIO" button to switch among different AV inputs. Press the

"VIDEO" button to display video signals.

SWITCHABLE RGB INPUTS

Use the "CCD/PC1/PC2" button to switch among CCD and different RGB signals. Each time the "CCD/PC1/PC2" button is pressed, it provides seamless transitions among different sources such as Camera (CCD), COMPUTER(IN), and RGB (IN).

Notes: RGB OUT always outputs RGB IN signals.

PROJECTOR ON/STANDBY

Press the "POWER" button to turn on the DP580's power and press the "Ppw" button to turn the projector power on. To turn the projector standby after use, press the "Ppw" button more than 2 seconds, and then the projector enters to the stand-by mode. (On the remote control, press the "PROJECTOR POWER" button)

PROJECTOR INPUTS SELECTION

When the projector is connected to several input sources, use the "Pin" button to switch signal inputs of the projector. (On the remote control, press the "PROJECTOR INPUT" button)

IMAGE REVERSION

Press the "Mir" button once to V-reverse the image and the vertically mirrored image will be displayed. Press the "Mir" button again to exit. (On the remote control, please press the "MIRROR" button)

DYNAMIC/STATIC MODE SWITCH

To display dynamic images, Press the "D./S." button to switch to the Dynamic mode, the image will be clear and has no choppy strobe effect. To display still images, press the "D. / S." button switch to the Static mode.

TITLE FUNCTION

Press the "Title" button once, the image split into two parts, the upper 1/8 part of the image will freeze and stay on top 1/8 of the screen. Press "Title" button again to exit the Title mode.

INFRARED REMOTE CONTROL

The DP580's remote control can control the camera from different angels. Please note that an infrared remote control can only be used up to a certain distance to the unit. Objects situated between the visualizer and the infrared remote control and a weak battery may interfere with the reception. On the left side of the visualizer stage, there is a built-in remote control storage compartment where you can store the remote control when you not use it.

IMAGE SCROLLING

Press the "↑" button to scroll the image down to display the upper part of the image. Press the "↓" button to scroll the image up to display the lower part of the image.

USB PORT

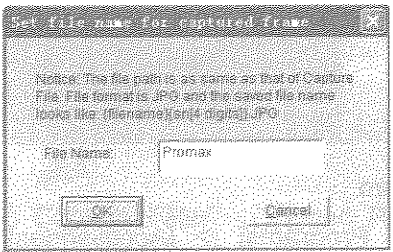
The USB port can be used to transfer still images from the visualizer to a computer. No additional computer hardware is required. In this way, the visualizer can be used as a 3-D scanner for your computer. Connect the Visualizer to your computer with the supplied USB cable. The ProMax Visualizer Software is available on the supplied CD-ROM.

VIDEO DISPLAY AND CAPTURE

A. Static Images Snap

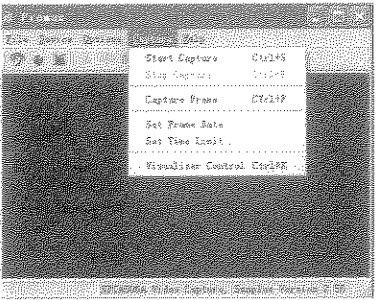
Select [Start] -> [All Programs] -> [ProMaxVideoCap] -> "Image Capture

for ProMax Visualizer" to open the VideoCap.exe. Click [File] -> [Set Capture File] to locate the image file into your desired folder. Then click [Set Frame File Name] to input the name of the file. Click [Capture] -> [Capture Frame] to save the static image.



B. Snap Video Stream

Click [File] -> [Set Capture File] to select the location of the file to be saved. Then input the name of the file. Click [Capture] -> [Start Capture] to start capture, and click [Capture] -> [Stop Capture] to stop. If you want to set the time limit for the capture, select [Capture] -> [set time limit] to set the time limit. (If you have set the time limit, it will stop automatically when the time is up.)



C. Display and Edit the Static Image

You can use the "Imaging" or "Paint" tool to display and edit the static image. To run a tool, click [Start] -> [All Program] -> [Accessories] -> "Imaging" or "Paint" to open a picture. A sample is shown as follows: